



# **Structural Analysis and Design Software**

## Membrane Structures with Wind Loads From CFD Wind Simulation



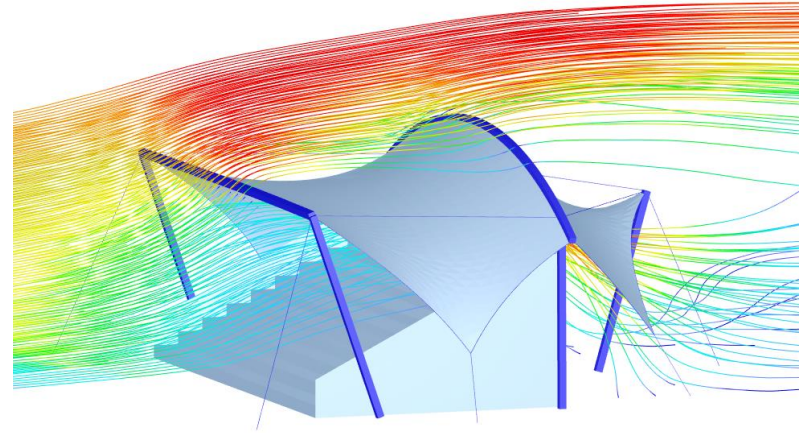
**Dipl.-Ing. (FH) Andreas Hörold**

Marketing & Public Relations  
Dlubal Software GmbH

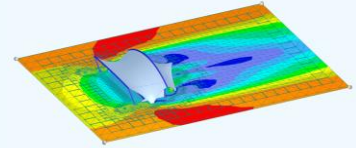


**Dipl.-Ing. (BA) Andreas Niemeier, M.Eng.**

Product Engineering & Customer Support  
Dlubal Software GmbH



# Questions During the Presentation



The screenshot displays the GoToWebinar interface. At the top, there is a menu bar with 'File', 'View', and 'Help'. Below it is a 'Sound Check' indicator with a green bar and a question mark. The 'Audio' section includes radio buttons for 'Computer audio' (selected) and 'Phone call'. A 'MUTED' indicator is present. Below this, there are dropdown menus for 'Mikrofon (2- Sennheiser USB h...)' and 'Lautsprecher (2- Sennheiser U...'. A volume slider is also visible. The 'Questions' section is currently empty. At the bottom, there is a text input field with the placeholder 'Enter a question for staff' and a 'Send' button. The footer of the interface shows 'Webinar ID: 373-901-987' and the 'GoToWebinar' logo.

Show or hide control panel

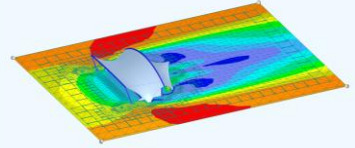
Adjust audio settings

Ask questions

E-mail: [info@dlubal.com](mailto:info@dlubal.com)



# Wind Load Generation for Integral Membrane Structures

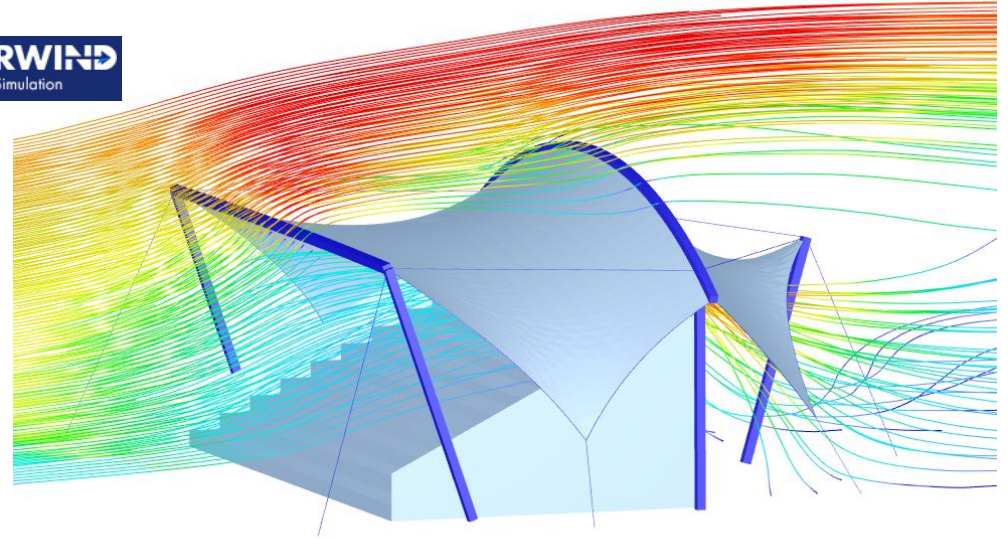


- Modeling a grandstand roof
  - Loading (self weight, snow)
  - Wind load generation based on CFD
  - Combination of loads
  - Design of member elements
- 
- Consideration of structures that have an influence on the wind flow
  - Renewed wind load generation based on CFD

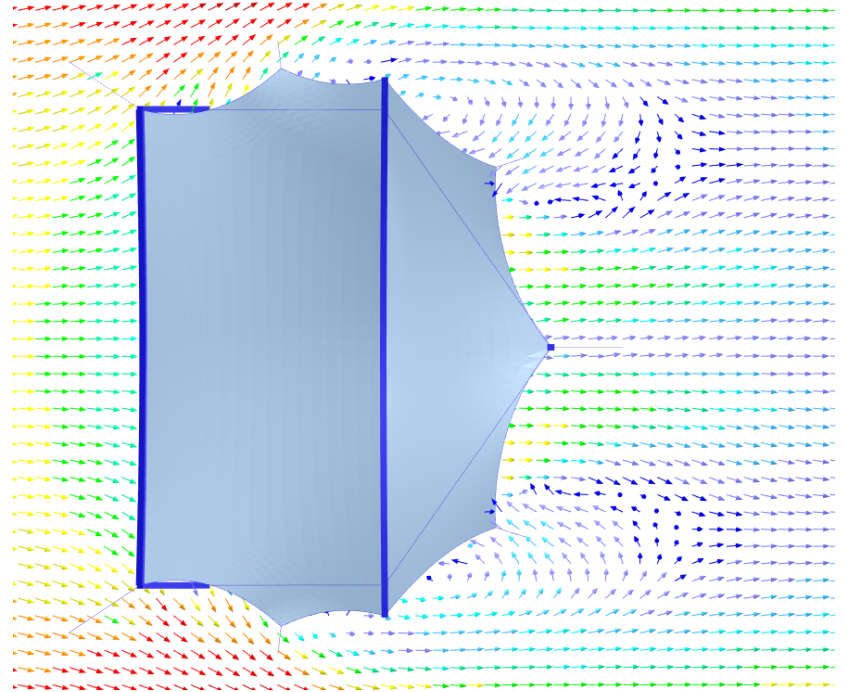
**RFEM**



**RWIND**  
Simulation



**Thank you for your  
attention!**





[www.dlubal.com](http://www.dlubal.com)